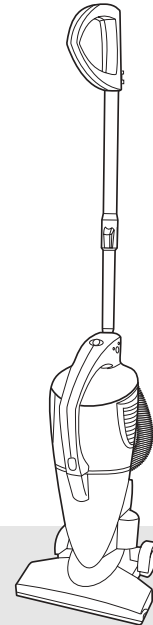


morphy richards®

## Pod vacuum cleaner



Please read and keep these instructions



**UK**  
Helpline 0870 060 2604  
Replacement parts 0870 167 6635

**Ireland**  
1800 409119

getting the best from  
your new cleaner...

### If your cleaner isn't picking up as well as it should, please check

- **Dust filter**

*It is important to clean it everytime you empty the pod, otherwise the performance of the cleaner will be impaired. See page 5 - Cleaning the dust filter. A spare dust filter is provided.*

- **Blockages**

*Check the nozzle, tube and hose for blockages.*



[www.morphyrichards.co.uk](http://www.morphyrichards.co.uk)

## Important safety instructions

The use of any electrical appliance requires the following of common sense safety rules.

Primarily there is danger of personal injury and secondly danger of damage to the appliance and property. These are indicated in the text by the following two conventions:

**WARNING: Danger of personal injury**

IMPORTANT: Damage to the appliance

In addition we offer the following essential safety advice.

### Location

- Do not use or keep this product outside when it is raining.
- Do not store the appliance near hot ovens or heating appliances.

### Mains lead

- Do not allow the mains lead to become strained or run this appliance over it.
- If the electrical cable becomes damaged the complete cable assembly must be replaced. Do not attempt this task yourself, contact Morphy Richards using the helpline number.

### Children

- Children do not understand the dangers associated with operating electrical appliances. Never allow children to use this appliance.

### Other safety considerations

- Never use the appliance without the filters installed.
- Never use the appliance to vacuum hot ashes, broken glass, sharp objects or liquids.
- Never use in the presence of explosive liquids or vapours.
- Never pick up inflammable or poisonous liquids such as petrol, copier toner, or other volatile substances. Never pick up acids, asbestos or asbestos dust.

- Always disconnect the appliance from the mains supply after use or prior to cleaning or emptying.
- The appliance should never be left running unsupervised.
- Never modify the cleaner in any way.
- Repairs to electrical appliances are only to be undertaken by trained personnel. Unprofessional repairs can be dangerous for users.
- Use only genuine Morphy Richards spare parts and accessories

## Electrical requirements

Check that the voltage on the rating plate of your appliance corresponds with your house electricity supply which must be A.C. (Alternating Current).

If the socket outlets in your home are not suitable for the plug supplied with this appliance, the plug should be removed and the appropriate one fitted.

**WARNING: The plug removed from the mains lead, if severed, must be destroyed as a plug with bared flexible cord is hazardous if engaged into a live socket outlet.**

Should the fuse in the 13 amp plug require replacement, a BS1362 13 amp fuse must be fitted.

## Description

Your Pod vacuum cleaner is a versatile machine that can be used as an upright cleaner or as a handheld.

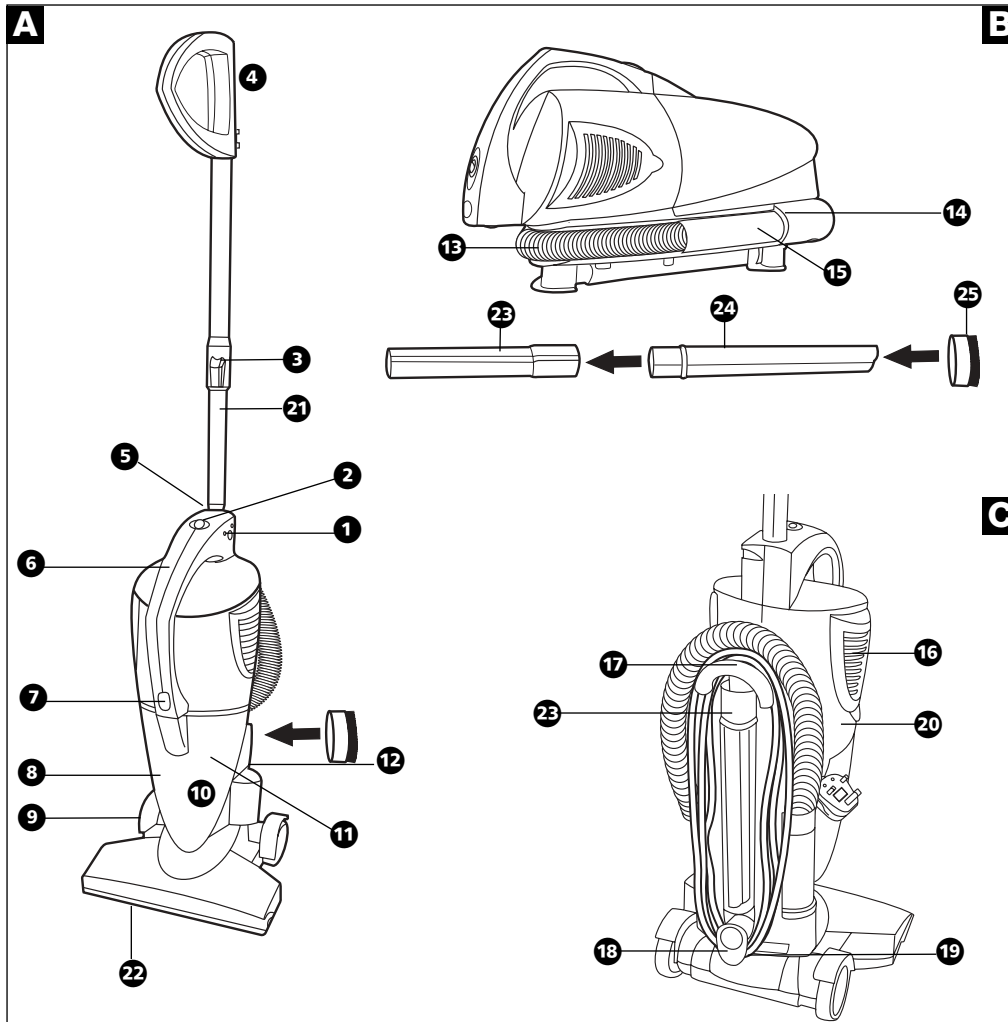
## Features

- 1 Telescopic handle release button
- 2 On/off switch
- 3 Telescopic tube extension button
- 4 Telescopic handle
- 5 Handle locking release pin (not shown)
- 6 Carrying handle
- 7 Pod release button
- 8 Dust collection pod
- 9 Wheels
- 10 Mesh filter (inside)
- 11 Dust filter (inside)
- 12 Brush storage location

- 13 Flexible hose
- 14 Hose end location
- 15 Hose end
- 16 Exhaust filter cover
- 17 Cable storage hanger
- 18 Cable storage quick release lever
- 19 Floor nozzle release button
- 20 Body

### Accessories you should have:

- 21 Telescopic handle tube
- 22 Floor nozzle
- 23 Plastic extension tube
- 24 Crevice tool (stored inside 23)
- 25 Brush attachment



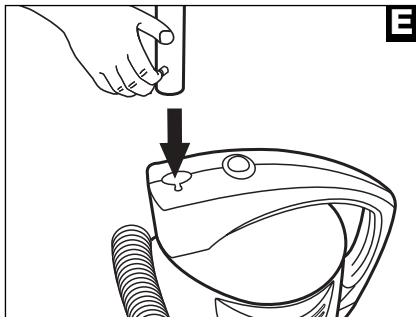
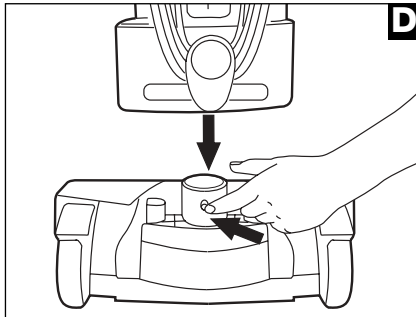
## Assembly

### To use as an upright **A**

- 1 Fit the floor nozzle by pressing in the locking pin and insert the nozzle into the hole at the base of the body **D**. Push down fully.
- 2 Locate the telescopic handle into the body by pushing in the locking pin and lowering the handle in until the locking pin locates in the locking hole **E**. To remove, press in the release button **1** and lift the handle out.
- 3 Adjust the telescopic handle by sliding the button **3** down and pulling out or pushing in the lower half **F**.

### To use as a handheld **B**

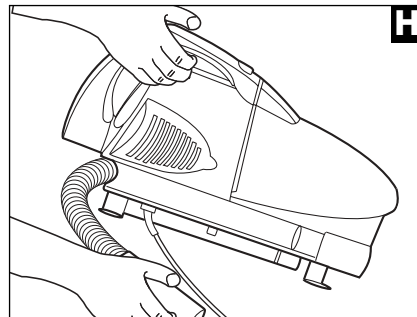
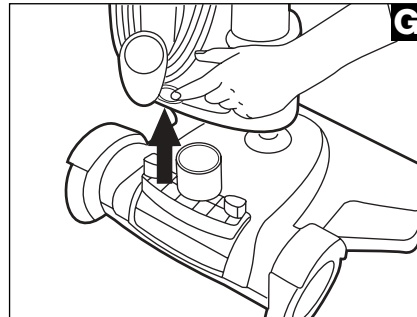
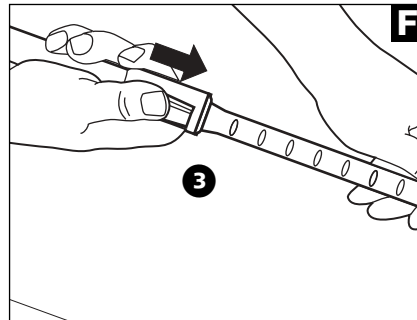
- 1 Remove the telescopic handle.
- 2 Remove the floor nozzle by pressing in the release button **19** and pulling the floor nozzle away from the body **G**.
- 3 Slide the hose end **15** from the hose end location **14**. **H**



- 4 Fit the extension tube **23** to the hose end **15**.
- 5 Fit the crevice tool **24** to the extension tube.
- 6 If required fit the brush **25** to the end of the crevice tool.

### Attachments

Uses for the brush attachment include stairs, upholstery, mattresses, curtains and hard surfaces like door mouldings and skirting boards. The crevice tool is particularly useful for cobwebs and in narrow gaps in the car around the handbrake and seat.



## Using

Unwind the cable or turn the quick release lever **18** and plug into a mains socket.  
Switch on. **I**

- 6** Replace the mesh filter into the pod.
- 7** Insert the dust filter, rear section first into the pod (ensuring it lies level with the pod). **M**

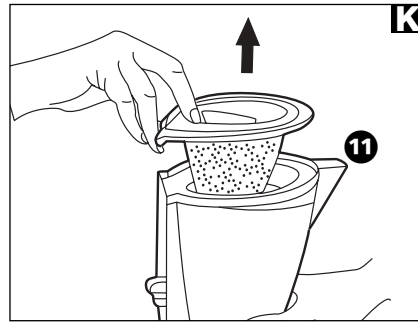
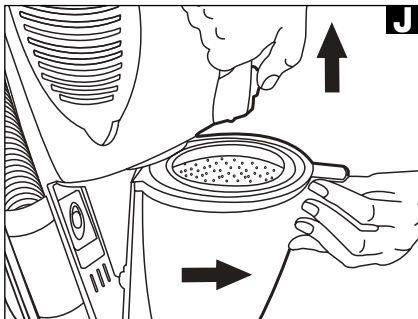
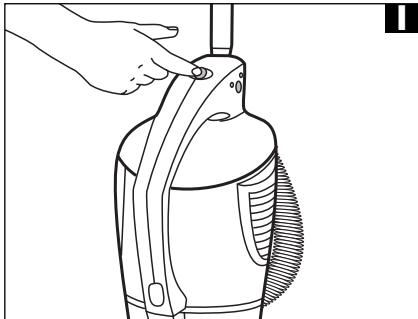
## Dust disposal

Ensure the Pod is switched off and disconnected from the mains supply.

- 1** Slide the pod release button up and pull the dust pod away from the cleaner. **J**

Note: When the floor nozzle is fitted the cleaner must be tilted slightly backwards to remove the dust pod.

- 2** Lift out the dust filter. **K**
- 3** Pull out the mesh filter. **L**
- 4** Empty the dust into a bin.
- 5** Clean the filters as described in next section.



## Cleaning the mesh and dust filters

**IMPORTANT:** Every time the pod is emptied, clean the filters by shaking rigorously, or by using the brush attachment.

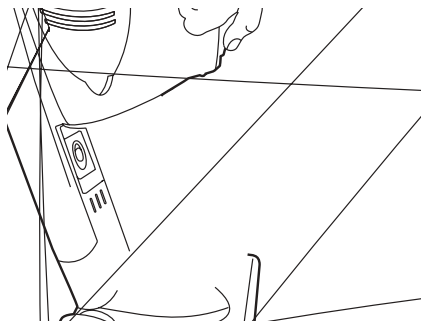
To maintain high suction, the dust filter 11 should also be washed regularly in warm water, but do not use detergent.

Allow the filter to dry naturally and ensure it is *totally dry* before installing it back into the cleaner.

A spare dust filter is provided to allow you to continue using your vacuum whilst the original filter is washed and dried.

## Replacing dust container

- 1 Insert the hook at the bottom rear of the dust pod into the tray on the body. 14.
- 2 Push the dust pod towards the cleaner body until it clicks into place.



## Exhaust filter

After approximately 5 emptyings of the dust container the exhaust filter should be cleaned.

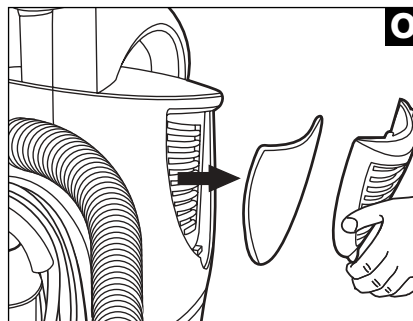
- 1 Unclip the exhaust filter cover 16 by lifting the bottom tab. 10.
- 2 Remove foam filter.
- 3 Shake the filter vigorously to remove any build up of dust.
- 4 Refit exhaust filter cover by inserting top two pegs then clip in the bottom tab.

Depending on usage, the exhaust filter should be replaced approximately every 6 months.

## Purchasing replacement filters

The lifetime of the dust filter is dependant largely upon usage of the cleaner. Should the dust filter become damaged or if there is a noticeable drop in performance even after washing, it should be changed immediately. Use only Morphy Richards replacement filters which can be purchased from specialist retailers or by calling the number on the front page of this leaflet.

genuine  
replacements



## Cleaning the machine

Use the brush attachment on the hose and use the Pod to vacuum itself. To keep the underside of the cleaning head clean, vacuum it at regular intervals using the crevice tool.

Or, disconnect the Pod from the mains supply and remove dust by using a soft damp cloth and wipe dry. Do not use scourers or abrasive cleaners.

## Helpline

If you have any difficulty with your appliance, do not hesitate to call us. We're more likely able to help than the store from where you bought it.

Please have the following information ready to enable our staff to deal with your query quickly:

- Name of the product;
- Model number as shown on the underside of the appliance;
- Serial number.



## Your two-year guarantee

- **It is important to retain the retailers receipt as proof of purchase.** Staple your receipt to this back cover for future reference.

Please quote the following information if the product develops a fault. These numbers can be found on the base of the product.

Model no.                      Serial no.

All Morphy Richards products are individually tested before leaving the factory. In the unlikely event of any appliance proving to be faulty within 28 days of purchase it should be returned to the place of purchase for it to be replaced.

If the fault develops after 28 days and within 24 months of original purchase, you should take the appliance to your nearest service agent. A list containing details of your nearest service agent is included with your appliance but please contact the helpline quoting model number and serial number should you require further assistance. Repair or replacement of the product is subject to the exclusions set out below (1-6).

If you suspect a fault, follow the simple checks detailed below before returning the appliance or calling the helpline.

- Check the filters for blockages.
- Check the hose and tubes for blockages.
- Check the plug is firmly in the socket and the supply is switched on.
- Make sure the socket is working by trying another appliance.

For additional information on Morphy Richards products [www.morphyrichards.co.uk](http://www.morphyrichards.co.uk)

*Morphy Richards products are intended for household use only*

*Morphy Richards has a policy of continuous improvement in product quality and design. The Company, therefore, reserves the right to change the specification of its models at any time.*

If for any reason this item is replaced during the two-year guarantee period, the guarantee on the new item will be calculated from original purchase date. Therefore it is vital to retain your original receipt or invoice to indicate the date of initial purchase.

To qualify for the two-year guarantee the appliance must have been used according to the manufacturers instructions.

Morphy Richards shall not be liable to replace or repair the goods under the terms of the Guarantee where:

- 1 The fault has been caused or is attributable to accidental use, mis-use, negligent use or used contrary to the manufacturers recommendations or where the fault has been caused by power surges or damage caused in transit.
  - 2 The appliance has been used on a voltage supply other than that stamped on the products.
  - 3 Repairs have been attempted by persons other than our service staff (or authorised dealer).
  - 4 Where the appliance has been used for hire purposes or non-domestic use.
  - 5 The guarantee excludes consumables such as the filters.
  - 6 Morphy Richards are not liable to carry out any type of servicing work, under the guarantee.
- This guarantee does not confer any rights other than those expressly set out above and does not cover any claims for consequential loss or damage. This guarantee is offered as an additional benefit and does not affect your statutory rights as a consumer.
- This guarantee is valid in the UK and Ireland only.

**morphy richards®**

The After Sales Division,  
Registered address,  
Morphy Richards Ltd, Mexborough,  
South Yorkshire, England, S64 8AJ

**Helpline** (office hours)  
UK 0870 060 2604  
Republic of Ireland 1800 409119

VC73090M UK Rev 1 0204